

Price List

AMERICAN-BOSCH *Round-the-World* **RADIO**



<u>MODEL NUMBER</u>	<u>PRICE</u>
420	\$39.95
440T	54.50
440C	69.50
460B	67.50
460A	69.50
460R	94.50
480D	149.50

(August, 1934)

You imagine yourself adventuring in foreign lands when you twirl the dial of an **AMERICAN-BOSCH Round-the-World RADIO**



Buy a new **1935 AMERICAN-BOSCH Round-the-World RADIO**

AMERICAN-BOSCH Round-the-World RADIO

The makers of American-Bosch products have always taken pride in creating, designing, building and selling products superior to those commonly in use. Proven leaders in their fields, they are built up to a high standard of quality and not down to a price.

Tune in on NBC Sunday P.M. American-Bosch Radio Explorers Club featuring Captain Barker and famous explorers from the American Museum of Natural History.

UNITED AMERICAN BOSCH CORPORATION
Springfield, Mass. • New York • Chicago • Detroit

American-Bosch Radio is licensed under patents and applications of R. C. A.



Form No. 2041/2-BEEM834—Printed in U.S.A.

Says Captain Barker **"BE A RADIO EXPLORER"**



with a new **1935 AMERICAN-BOSCH Round-the-World RADIO**

"It's Like EXPLORING in FOREIGN LANDS to tune in these American-Bosch Round-the-World Radios." CAPTAIN BARKER

"41 times I have sailed around Cape Horn in windjammers. I've had many an adventure in almost every country in the world. And by gad I may tell you, all these experiences come crowding back to me as I sit twirling the dials of my American-Bosch Round-the-World Radio. I'm transported once again to the lands that haunt my memories. It's almost as thrilling as actual adventure itself!"

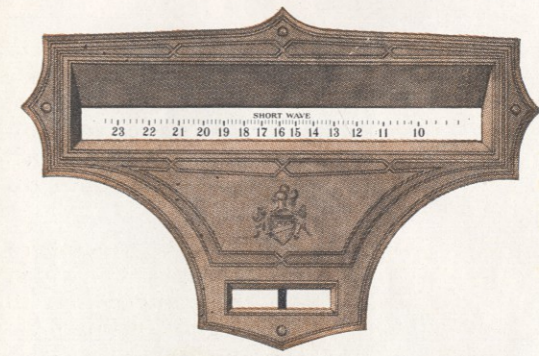
JAMES P. BARKER, Master Mariner.
Commander, American-Bosch Radio Explorers Club.

* * * *

You'll never be content with a stay-at-home radio when you discover how easily you can adventure round the world with a new 1935 American-Bosch Round-the-World Radio.

"The first night we had it," writes one owner of a Model 460R, "I got England, Germany, Spain, South America, police calls, amateur conversations, Trans-Atlantic telephone calls and aeroplane conversations. Not only did we pick up all this entertainment very easily, but it was all very clearly understood."

Anybody can tune round the world on an American-Bosch Radio. A patented exclusive American-Bosch feature—the Multi-Wave Selector, described and illustrated at right—makes round the world tuning a simple



The patented Multi-Wave Selector—A mere turn of the switch brings before your eyes the tuning scale of the particular wave band you want, identified by a special color. Only one wave band scale is visible at a time—and that is in color. No other round-the-world radio has this same simplified, confusion-ending all-wave tuning feature. Model 480D also introduces "Silhouette Tuning," which shows by means of shadow the exact tuning point for best reception.

matter at last, because it shows only one tuning scale at a time.

Brilliant Advances in Engineering

These new American-Bosch Radios for 1935 are a miracle of technical perfection. After months of slow, patient, scientific research American-Bosch engineers have developed a new type of continuous tone control superior to anything hitherto

known. Introduced into every American-Bosch set regardless of cost, there have been achieved a degree of tone brilliancy, an advance in undistorted power and volume, an era of smooth operation for which radio engineers everywhere have hitherto labored in vain.

Every set is built on the new principle of Anchored Construction by means of which all wiring and parts are grouped into an orderly, shielded, thoroughly anchored arrangement that gives new insurance against troublesome breakdowns on the one hand; and simplifies servicing on the other.

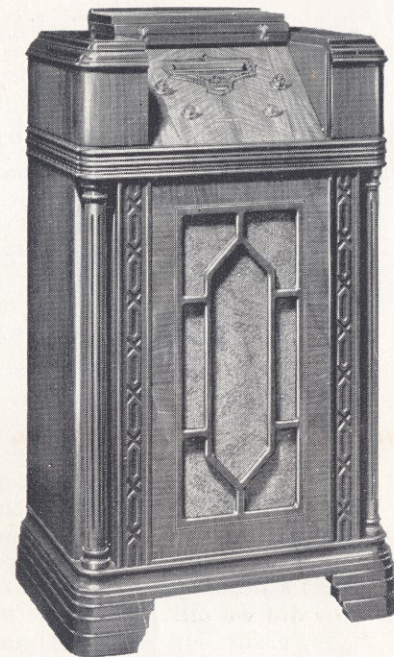
Brilliant New Ideas in Radio Design

Every cabinet in the 1935 line is a distinguished addition to any room. Particularly noteworthy are Models 460R and 480D which introduce an original American-Bosch idea in radio design—RIGHT-ANGLE TUNING, the comfort angle for tuning a radio accurately. With Right-Angle Tuning you can tune a set just as easily standing up or sitting down—without bending, stooping, crouching, stretching.

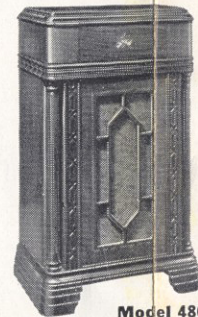
Right-Angle Tuning, which brings new beauty to the appearance of radio, is an exclusive American-Bosch achievement!

LISTEN TO *London* (11.75 MEGACYCLES)... TO *Sydney, Australia* (9.59 MEGACYCLES)... TO *Berlin* (15.20 MEGACYCLES)... TO *Johannesburg, Africa* (6.12 MEGACYCLES)... TO *Buenos Aires* (10.35 MEGACYCLES)... TO *your own Local Police Calls!*

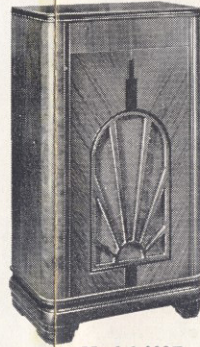
on the 1935 AMERICAN-BOSCH Round-the-World RADIOS



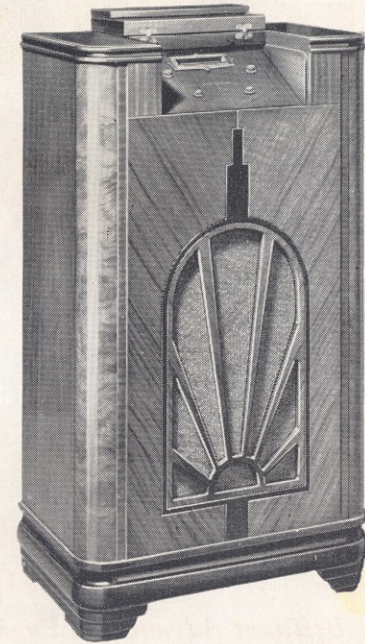
Model 480D—10 tube, 12-tube-performance all-wave superheterodyne console radio with Right-Angle Tuning. Range includes all waves from 540 to 22,500 Kilocycles (2 197 communication channels). Multi-Wave selector "Silhouette Tuning" facilitates precise reception. Full automatic volume control. 18 Watts output. 4-gang condenser. New superior continuous type tone control. Superior audio quality. Anchored construction. Unexcelled ability to tune in foreign stations.



Model 480D
Showing lid closed



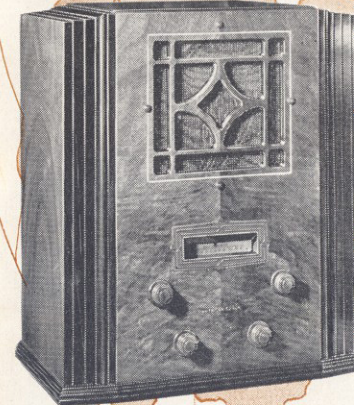
Model 460R
Showing lid closed



Model 460R—7 tube, 9-tube-performance, all-wave superheterodyne console radio with Right-Angle Tuning. Range includes all waves from 540 to 21,000 Kilocycles (2,047 communication channels). Multi-Wave selector. Superior audio quality. New superior continuous type tone control. Full automatic volume control. Large full floating coil dynamic speaker. Anchored construction. Chassis has shock-proof mounting.



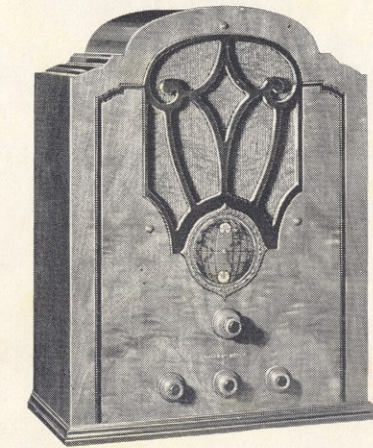
Model 460A — 7 tube, 9-tube-performance, all-wave superheterodyne console radio. Range includes all waves from 540 to 21,000 Kilocycles (2,047 communication channels). Multi-Wave selector. Superior audio quality. New superior continuous type tone control. Full automatic volume control. Large full floating coil dynamic speaker. Anchored construction. Chassis has shock-proof mounting.



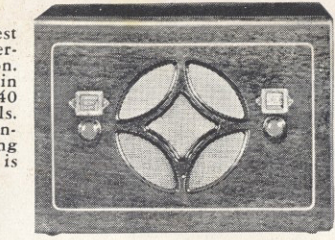
Model 460B — 7 tube, 9-tube-performance, all-wave superheterodyne console radio. Range includes all waves from 540 to 21,000 Kilocycles (2,047 communication channels). Multi-Wave selector. Superior audio quality. New superior continuous type tone control. Full automatic volume control. Large full floating coil dynamic speaker. Anchored construction. Chassis has shock-proof mounting.



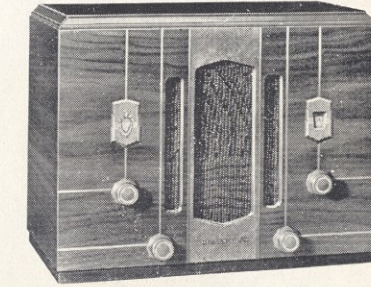
Model 440C—6 tube, 9-tube-performance, standard and short wave superheterodyne console radio. Range includes 540 to 1,600 Kilocycles; and short wave from 5,600 to 15,500 Kilocycles containing the most important useful group of foreign stations (1,098 communication channels). Compass Dial. Shock-proof mounting. Multi-Wave selector. Large full floating coil dynamic speaker. New superior continuous type tone control. Anchored construction.



Model 440T—6 tube, 9-tube-performance, standard and short wave superheterodyne console radio. Range includes 540 to 1,600 Kilocycles; and short wave from 5,600 to 15,500 Kilocycles containing the most important useful group of foreign stations (1 098 communication channels). Compass Dial. Shock-proof mounting. Multi-Wave selector. Large full floating coil dynamic speaker. New superior continuous type tone control. Anchored construction.



Model 402—5 tube, 8-tube-performance, latest improved superheterodyne Dual Wave Personal radio for A. C.—D. C. operation. Portable. Size: 10½" x 7½" x 5¼". Built-in antennae, no ground needed. Range: 540 to 1,750 Kilocycles. Brings in police calls. Kilocycle tuning. Full automatic volume control. Illuminated calibrated dial. Full floating coil dynamic speaker. More volume than is needed for average-size room.



Model 420—5 tube, 8-tube-performance, Dual Wave superheterodyne Personal radio for A.C. operation. Portable. Size: 12½" x 10" x 6¾". Range: 540 to 3,600 Kilocycles (307 communication channels); with special focus on police calls at 1,700 and 2,400 Kilocycles. Full automatic volume control; new superior continuous type tone control. Full floating coil large size dynamic speaker. Anchored construction.